

creating places for **(and with)** people

Contemporary Australian Policy and Practice

Presentation by

**Peter Jensen**

Director

Jensen Planning + Design

to the

Hong Kong Institute of Urban Design Conference

31 March – 1 April 2012

Recent Australian Government Initiatives \*

What's New in South Australia \*

The Integrated Design Commission ↙

New Participatory Models Promoting Integrated Design \*

# Australian Government Initiatives \*

3 Levels of Government



COAG  
Council of Australian Governments



City Reforms



\* population + economic growth

\* climate change

\* housing affordability

\* urban congestion



Major Cities Unit  
Policy, Planning + Infrastructure

# Our Cities, Our Future \*

“A National Urban Policy for a Productive, Sustainable and Liveable Future”



The role of the Australian Government is improving our major cities through

direct investment 

influencing the actions of others 

# Creating Places for People \*

## An **Urban Design Protocol** for Australian Cities



### Collaboration between

community groups 

professions 

industry 

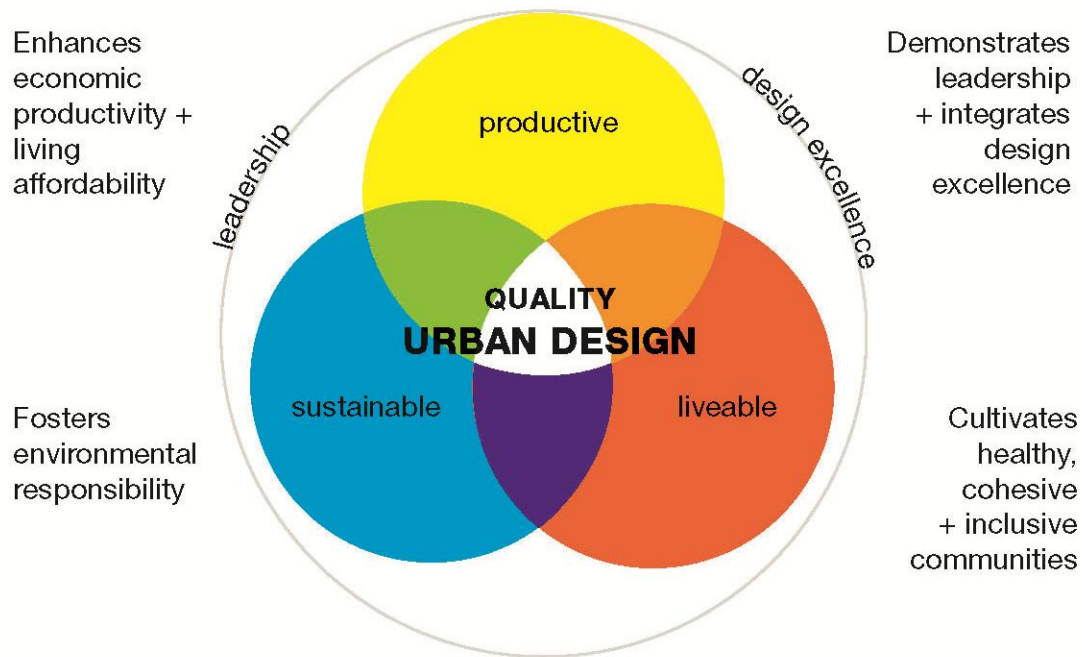
all levels of government 



Encouragement of world-class urban design \*  
and architecture (responding to COAG)

# AIMS AND PRINCIPLES

To create productive, sustainable and liveable places for people through leadership and the integration of design excellence




## PLACE: PRODUCTIVITY + SUSTAINABILITY

Creates the context for people to engage with the place



**Enhancing**

Enhances the local economy, environment + community



**Connected**

Connects physically + socially



**Diverse**

Diversity of options + experiences



**Enduring**

Sustainable, enduring + resilient

## PEOPLE: LIVEABILITY

Creates the context for people to engage with each other



**Comfortable**

Comfortable +  
welcoming



**Vibrant**

Vibrant, with people  
around



**Safe**

Feels safe



**Walkable**

Enjoyable + easy to  
walk + bicycle around

## LEADERSHIP + GOVERNANCE



### Context

Works within the planning, physical + social context



### Engagement

Engages with relevant stakeholders



### Excellence

Fosters excellence, innovation + leadership



### Custodianship

Considers custodianship + maintenance over time

# URBAN DESIGN PROTOCOL ON A PAGE

**AIM:** to create productive, sustainable and liveable places through leadership and the integration of design excellence

Urban design incorporates:

- Outcomes – described in the eight design principles
- Processes – described in the four principles about leadership and governance.



## PLACE: PRODUCTIVITY + SUSTAINABILITY

	<b>Enhancing</b>		<b>Connected</b>		<b>Diverse</b>		<b>Enduring</b>
Enhances the local economy, environment + community		Connects physically + socially		Diversity of options + experiences		Sustainable, enduring + resilient	

## PEOPLE: LIVEABILITY

	<b>Comfortable</b>		<b>Vibrant</b>		<b>Safe</b>		<b>Walkable</b>
Comfortable + welcoming		Vibrant, with people around		Feels safe		Enjoyable + easy to walk + cycle around	

## LEADERSHIP + GOVERNANCE

	<b>Context</b>		<b>Engagement</b>		<b>Excellence</b>		<b>Custodianship</b>
Works within the planning, physical + social context		Engages with relevant stakeholders		Fosters excellence, innovation + leadership		Considers custodianship + maintenance over time	

Outcomes

Processes

# Adelaide “Thinker in Residence” Program \*



Professor Laura Lee (USA) \*

Integrated Design Strategy for South Australia (2008) \*

New approach to designing, planning and nurturing the built environment \*

# South Australia's Integrated Design Commission \*



Advocates the Value of Design \*

Independent Commission working across

design 

planning 

architecture 

heritage 

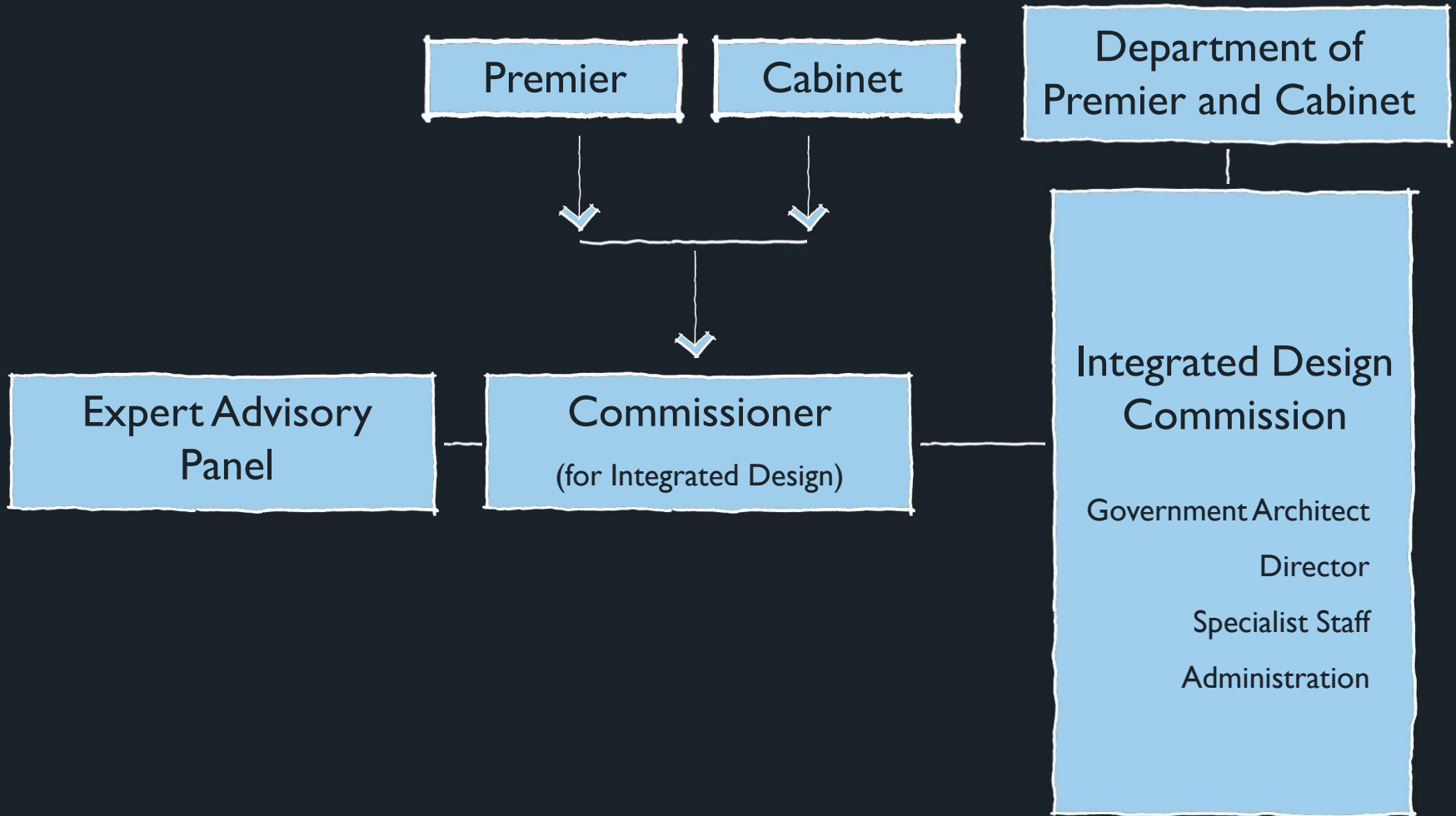
infrastructure 

development 

Advice to Government \*

Resource to Industry \*

# Connection to Government \*



# Integrated Design Commission Purpose \*



Leadership \*

Independent and expert advice \*

Strategic direction \*

Creative new responses \*

*“We want people to get interested in what their city is going to look like. We want it talked about and argued about. Controversy is inseparable from good urban planning and very desirable ” \**

Former South Australia Premier, Don Dunstan

## Five Key Principles \*



Design in all stages (**early!**) \*

Collaborative culture \*

Environmental leadership \*

Evidence through research \*

Inform, engage and educate \*

# Sophisticated Enquiry \*



Reliable data stream \*

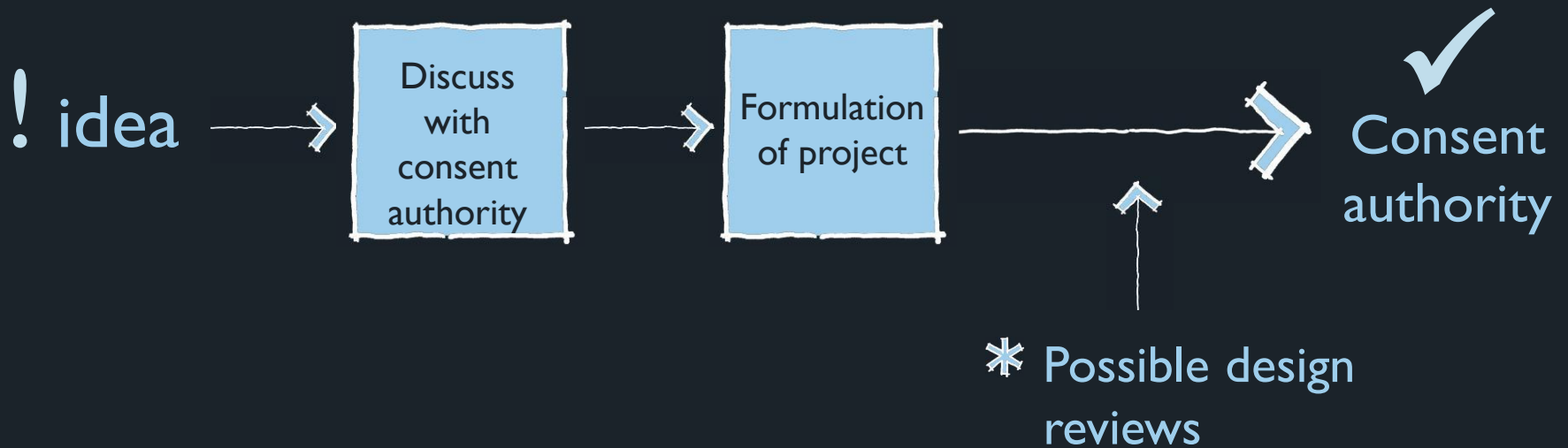
Evidence based \*

Smarter and targeted policy \*

Publication of data / evidence \*

Bringing the public with us \*

Critical thought about good design \*



# DESIGN REVIEW PROCESS

PANEL ONE  
MOVEMENT &  
NETWORKS

**x6**  
**MEMBERS**

OR RESERVE PANEL  
SPECIALIST AS  
DETERMINED BY IDC

PANEL THREE  
ARCHITECTURE &  
URBAN PLANNING

**x6**  
**MEMBERS**

OR RESERVE PANEL  
SPECIALIST AS DETERMINED  
BY IDC

PANEL THREE  
ARCHITECTURE &  
URBAN PLANNING

**x6**  
**MEMBERS**

OR RESERVE PANEL  
SPECIALIST AS DETERMINED  
BY IDC

PANEL FOUR  
MASTER-  
PLANNING

**x6**  
**MEMBERS**

OR RESERVE PANEL  
SPECIALIST AS  
DETERMINED BY IDC



SPECIALIST PANEL

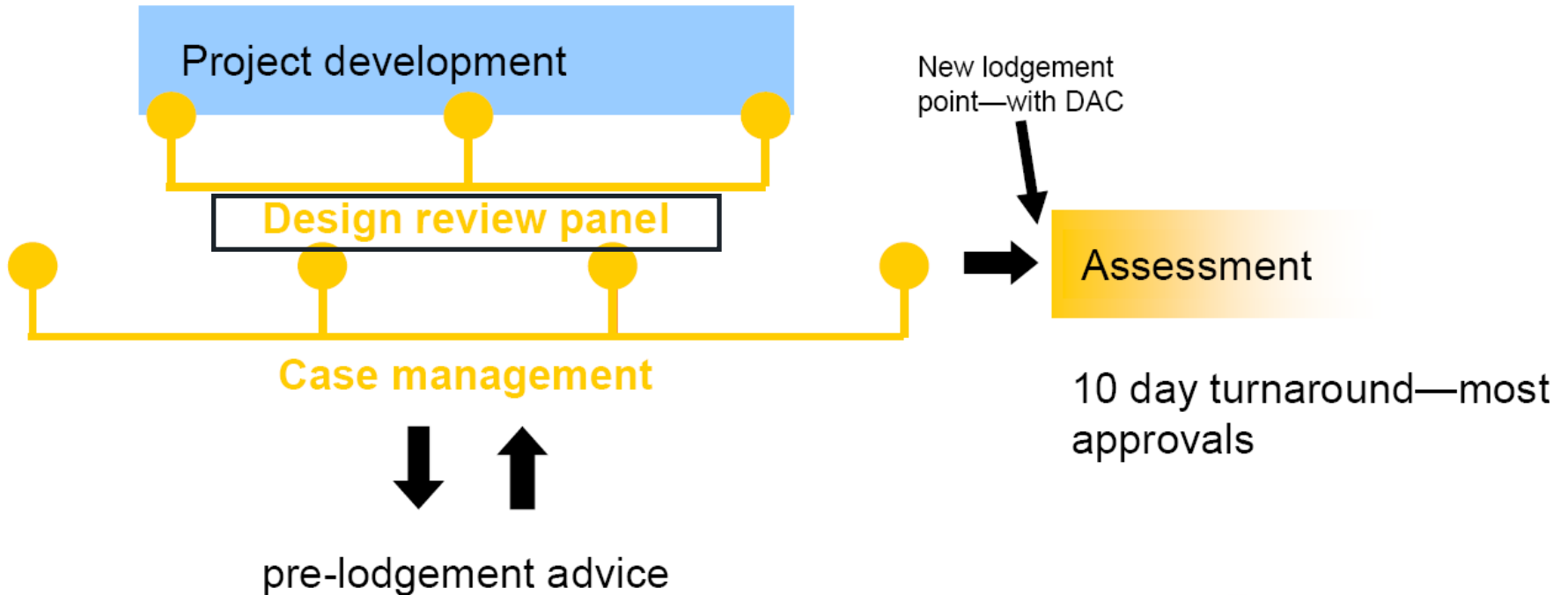
**x6**  
**MEMBERS**



**PROJECT  
SPECIFIC  
PANEL**

# Future process

4–6 months  
integrated process  
progressive certainty



# 5000+

YOUR IDEAS FOR A GREAT CITY

WHAT HOW IDEAS FORUMS BLOG RESOURCES

A project about city re-design and renewal for Adelaide



INTEGRATED  
DESIGN

Department for Education  
& Child Development



5000+

YOUR IDEAS FOR A GREAT CITY

Study Area  
5000+





**Lucy Turnbull**  
Company Director and  
former Mayor of Sydney

---



**Marcus Westbury**  
Renew Newcastle

---



**Prof. Shane Murray**  
Professor of Architecture,  
Monash University

---



**Prof. Malcolm Snow**  
CEO, Southbank Corporation

---



**Kiki Magro**  
CEO Corporation of the Town  
of Walkerville

---

# 25 PARTNERS, 5 SPECIALIST FORUMS

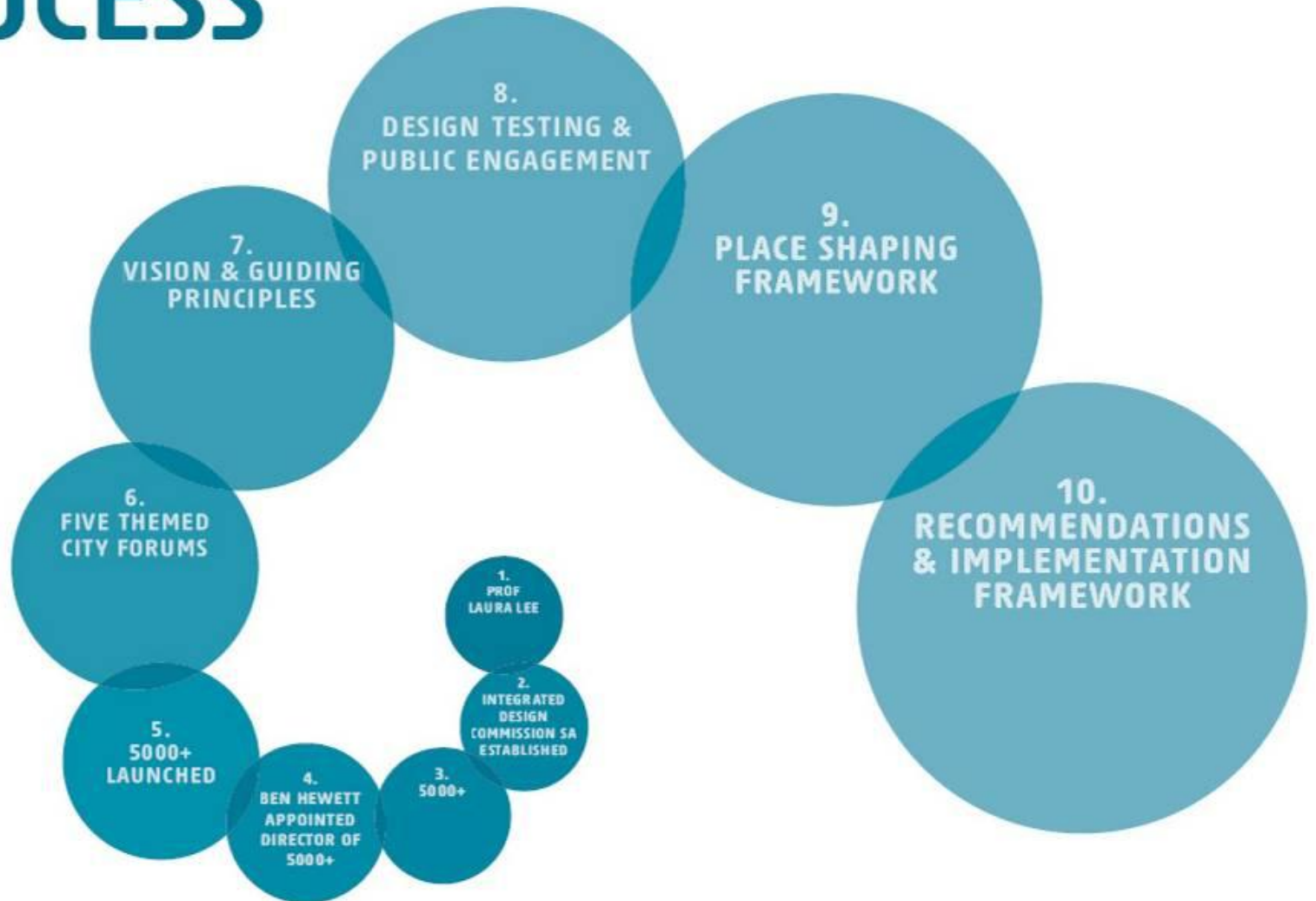








# THE 5000+ PROCESS





After



INTEGRATED  
DESIGN  
COMMISSION SA  
IMPROVING  
LIFE THROUGH  
DESIGN

# PATTERNS OF LIVING

Design Testing

5000+  
ADELAIDE: LIVEABLE CITY

5000+ an Integrated Design Strategy for inner Adelaide is supported by the Department of Regional Australia, Regional Development and Local Government and is a joint initiative of the South Australian Government and the Adelaide City Council, in association with the seven councils adjoining Adelaide.

March 2012



Government  
of South Australia

INTEGRATED  
DESIGN  
COMMISSION SA  
IMPROVING  
LIFE THROUGH  
DESIGN

# LIFE ON THE EDGE

An exercise  
in solicited optimism

5000+

INTEGRATED DESIGN STRATEGY  
FOR INNER ADELAIDE

5000+ an Integrated Design Strategy for Inner Adelaide is supported by the Department of Regional Australia, Regional Development and Local Government and is a joint initiative of the South Australian Government and the Adelaide City Council, in association with the seven councils adjoining Adelaide.

November 2011



Government  
of South Australia

**INTEGRATED  
DESIGN  
COMMISSION SA  
IMPROVING  
LIFE THROUGH  
DESIGN**

## DesignLAB v1.0 Safety in the City

**5000+**  
YOUR IDEAS FOR A GREAT CITY

5000+ an integrated design strategy for inner Adelaide is supported by the Department of Regional Australia, Regional Development & Local Government and is a joint initiative of the South Australian Government and the Adelaide City Council, in association with the seven councils adjoining Adelaide.



Government  
of South Australia

# Woodville Road Current Conditions

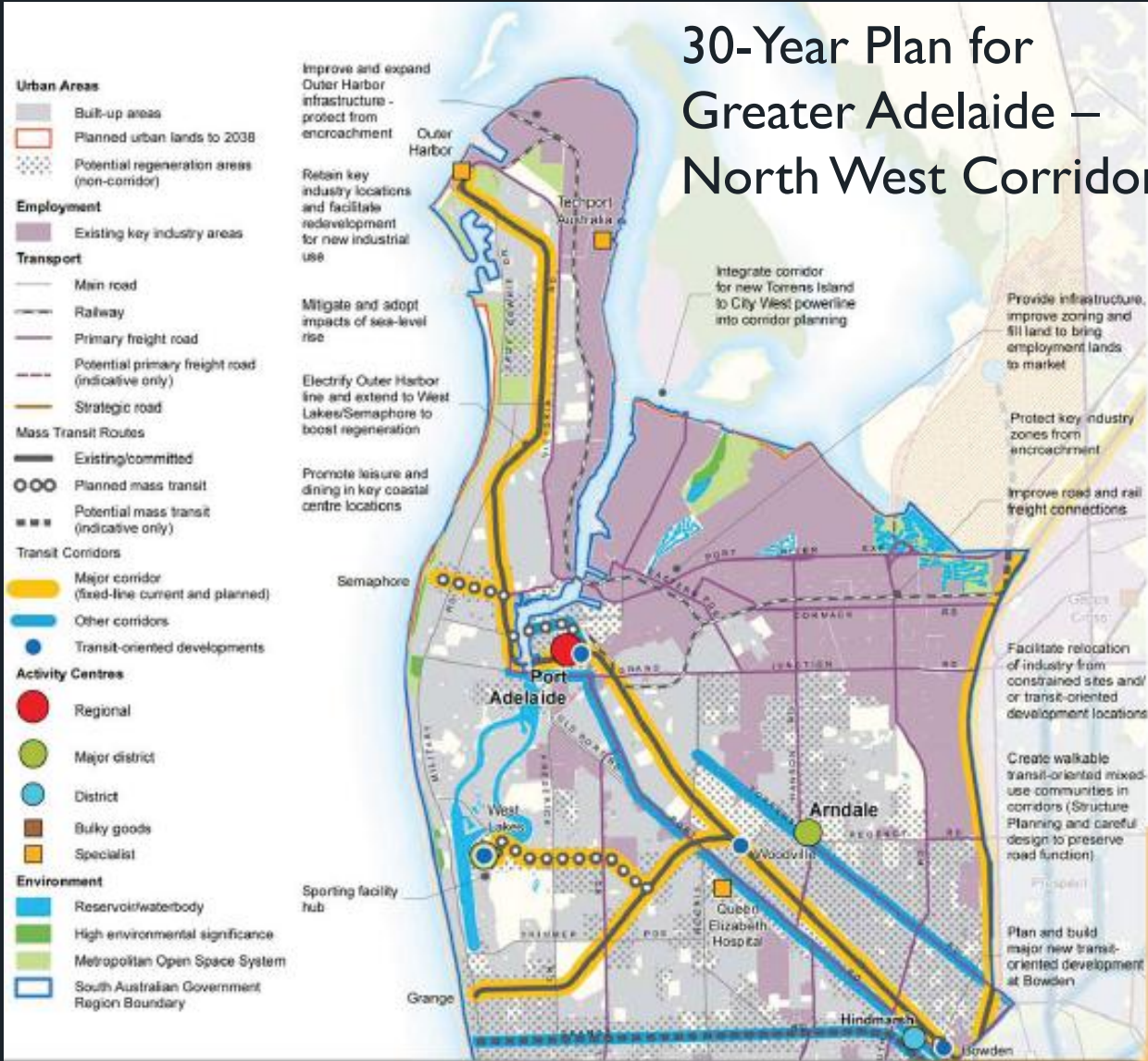


# Woodville Village Study Area





# 30-Year Plan for Greater Adelaide – North West Corridor



# Community Visioning Workshop

## Wednesday 21 April

### Be inspired

Be ready to be inspired and challenged by one of Australia's great engagement and place making experts: Gilbert Rochecouste of Village Well.

Through intensive consultation with key stakeholders and the broader community, Village Well will help develop a shared vision for Woodville Village.

**Community Visioning Workshop will be held at:**  
**The Champs Function Room**  
**Woodville West Torrens Football Club**  
**Oval Avenue, Woodville South**  
**7.00 pm - 9.30 pm Wednesday 21 April 2010**

### Who is Gilbert Rochecouste?

Gilbert is recognised both nationally and internationally as a leading voice in sustainable communities and businesses.

Gilbert is one of Australia's most sought after facilitators and engagement specialists and is recognised for his innovative thinking and catalyst ideas that have regenerated iconic places.

He has worked on some of the most challenging and complex communities and projects in both Australia and overseas with great success.

His engagement process is both inspiring and transformative and brings diverse mindsets to the table.



To register your interest in attending the Community Visioning Workshop:

Phone: 1300 116 747 or  
Email: [village.woodville@lmc.sa.gov.au](mailto:village.woodville@lmc.sa.gov.au)

WOODVILLE VILLAGE MASTERPLAN IS A PARTNERSHIP BETWEEN:



Government of  
South Australia

lmc





\* Community and Stakeholder Engagement

\* Strategic Planning

\* Planning and Urban Design

\* Transport Planning

\* Property and Economics

\* Rail Infrastructure

\* Landscape Architecture

\* Recreation Planning

\* Social Planning

\* Public Art and Community Art

\* Surveying



Charrette



Further  
Investigations



***Design Testing***

# Woodville Village Masterplan

FINAL REPORT

DECEMBER 2010  
PREPARED FOR THE CITY OF CHARLES STURT  
AND  
THE LAND MANAGEMENT CORPORATION



Government of  
South Australia

lmc



Jensen  
PLANNING  
+ DESIGN



place

products

industrial design

public art

graphic design

