

An aerial photograph of a modern, multi-level urban plaza. The plaza features several levels of walkways, ramps, and circular structures, all integrated with greenery. People are seen walking and gathering on the various levels. The architecture is clean and modern, with a focus on integrating nature into the urban environment. In the background, there are trees and a road with a white car and a bus. The overall scene is bright and sunny, suggesting a pleasant day.

MVRDV

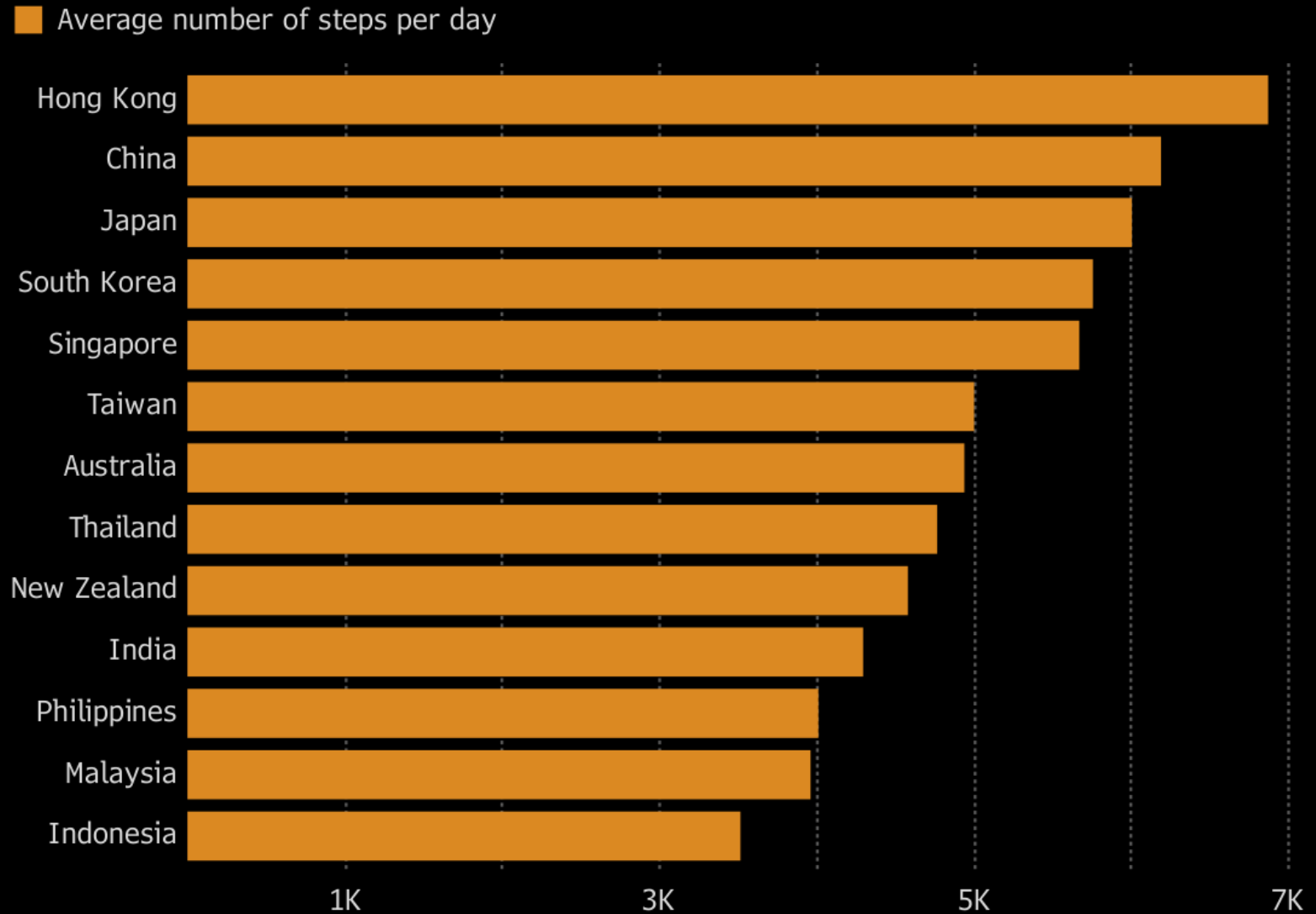
All-in Cities





One Step at a Time

Hong Kongers are the most active walkers whereas Indonesians prove more reluctant



Note: Data based on physical activity from 717,527 volunteers using smartphone app

Source: Stanford University





ACTIONS FOR ACTIVE AGEING – URBAN DESIGN FOR ALL

HKIUD CONFERENCE 2018

Prepared by

Hong Kong Institute of Urban Design

**Small things
that make a
difference**









Ghel architects

**Small things
that make a
difference**

**What is
“small”**

**What are
“things”**

**When does
something
make a
difference**

MVRDV

Research
urbanism
architecture

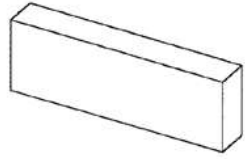




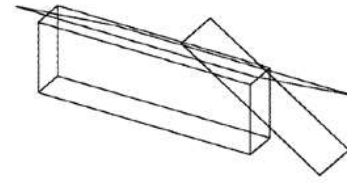
**The beauty
of curiosity and responsibility**



100 apartments



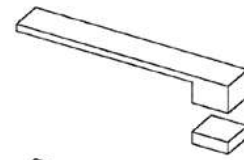
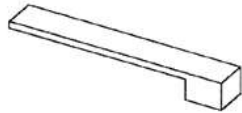
1



Angle of the sun

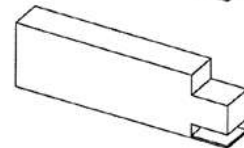
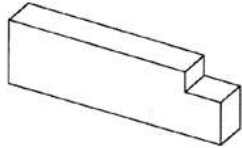
2

9 apartments



13 apartments + hall

91 apartments

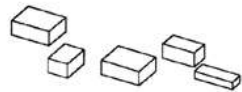


87 apartments

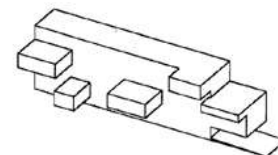
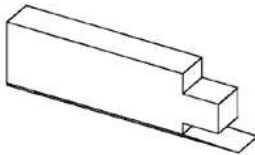
3

4

13 hanging apartments



87 apartments



100 apartments

5

6















Occupied interiors

333

333





Designing coexistence

New Roommate



Present Perfect

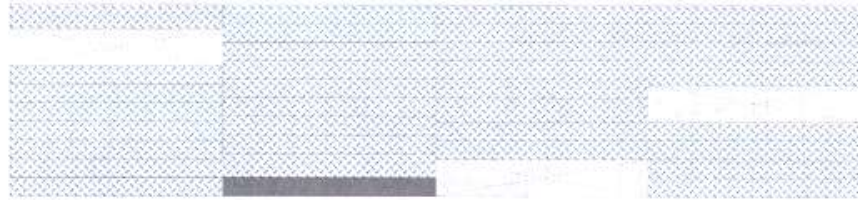
Evan Briggs



Old meets young

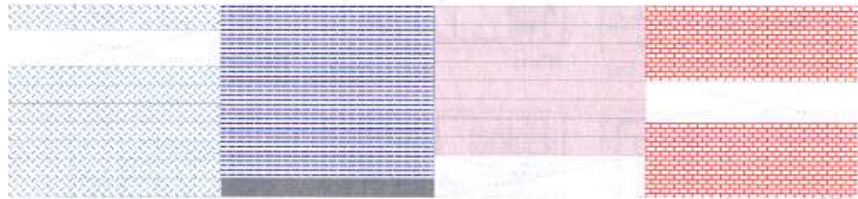


Political negotiations



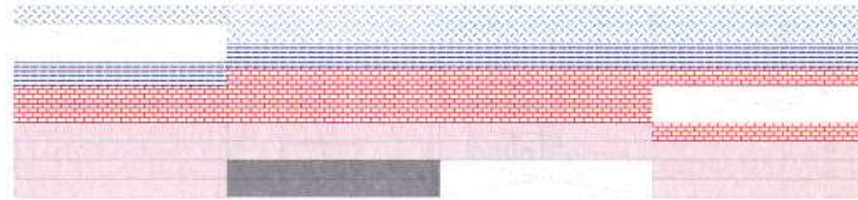
060595

Monoculture ?



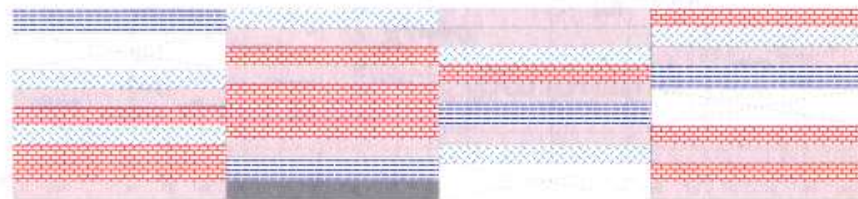
130595

Apartheid ?



160595

Social stratification ?

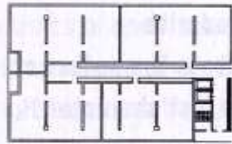


200595

Mix ?



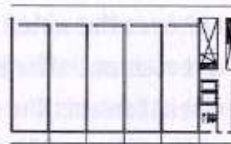
Mini neighbourhoods



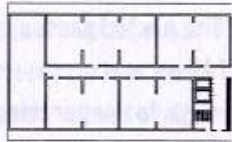
Panorama dwelling



Maisonette



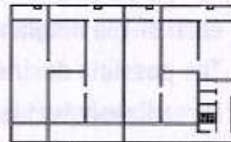
Small gallery



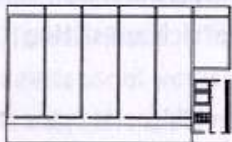
Hobby dwelling



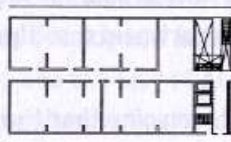
Maisonette



Big families



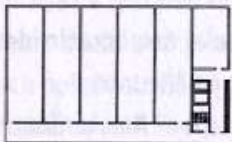
Canal house



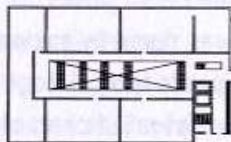
Senior



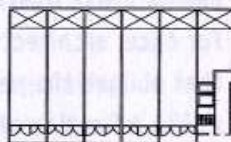
Loft 3



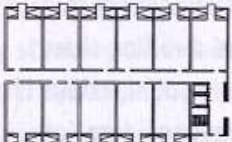
Canal house



Live and work dwelling



Unit 3



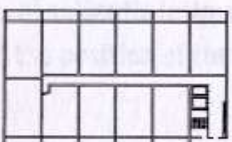
Venetian window



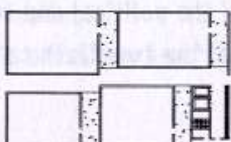
Loft



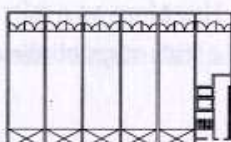
Unit 2



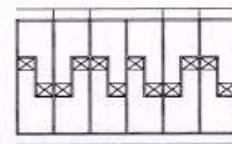
Venetian window



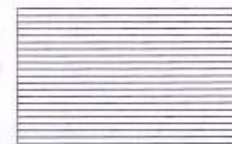
Penthouse



Unit 1



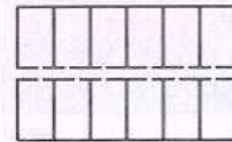
X-dwelling floor 1



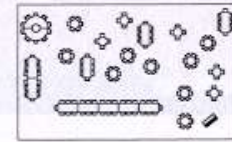
Terrace



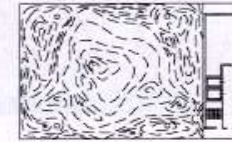
Allotments



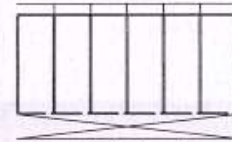
X-dwelling floor 0



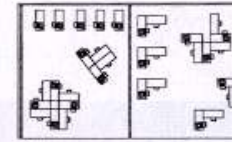
Restaurant



Sandpit



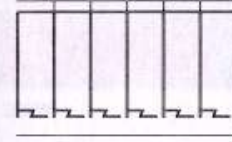
Balcony dwelling floor 1



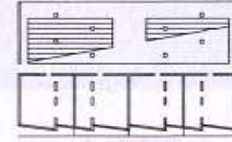
Offices



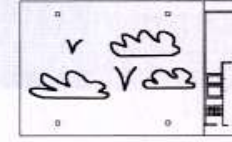
Midget golf



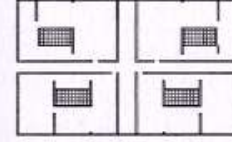
Balcony dwelling



Small studios



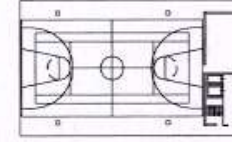
Void



Patio



Hall



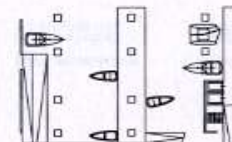
Sport



Small studios



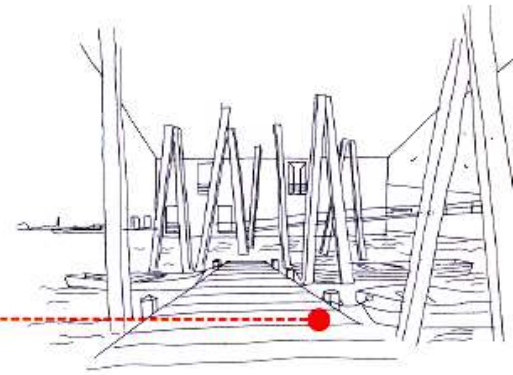
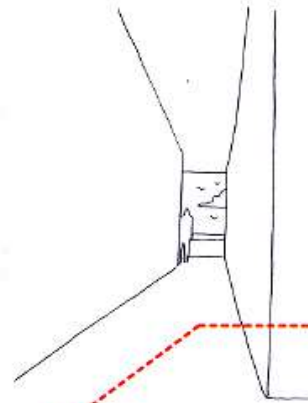
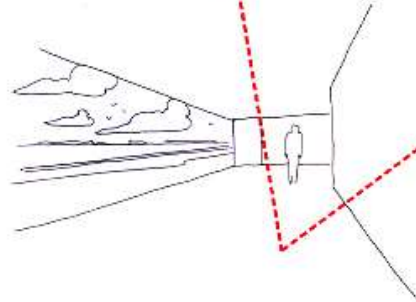
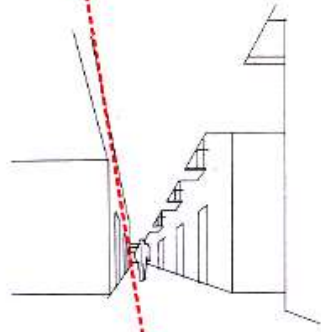
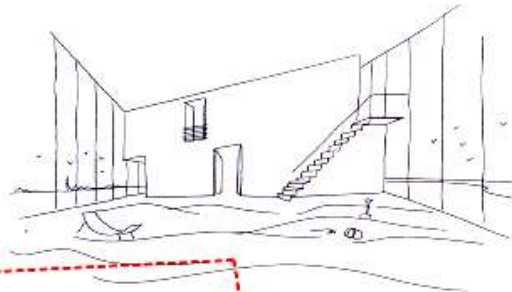
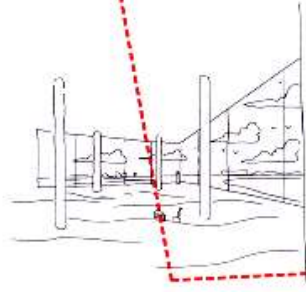
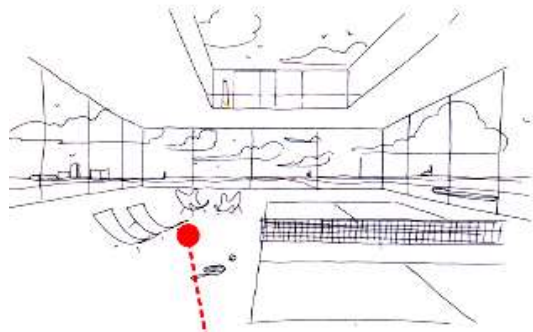
Storage



Marina







Public route













Aging in public

Participation in the urban life







EUROPEAN JEWELLERY

info

Dundas Street

MAC



Current Food market

Bron: Provast

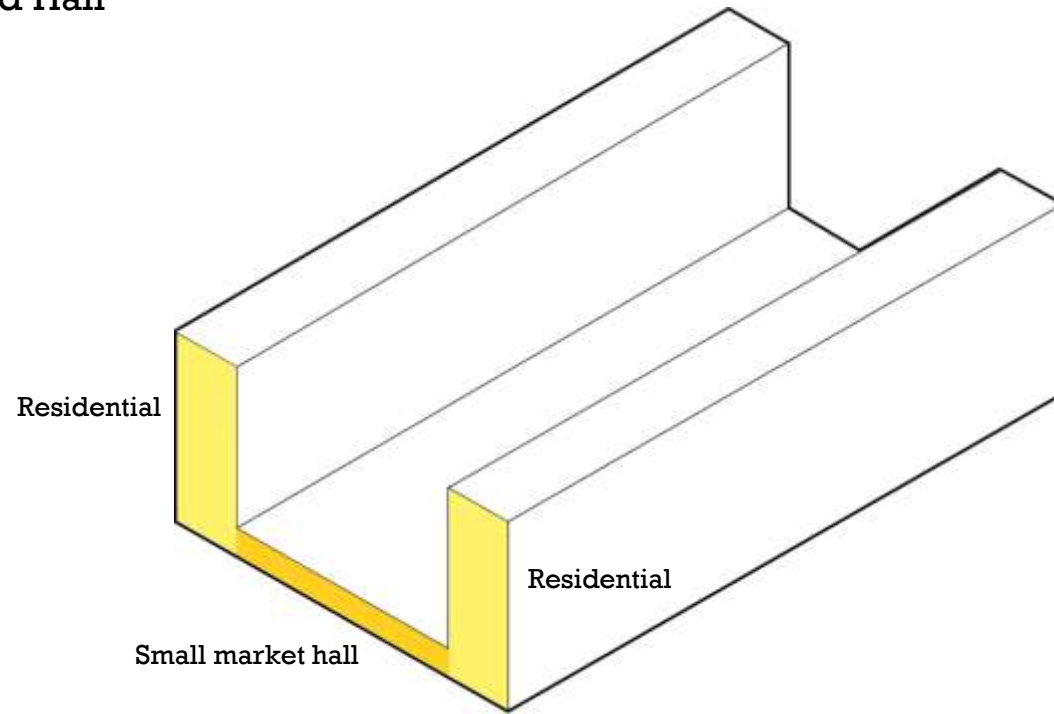


Covered food market + residential

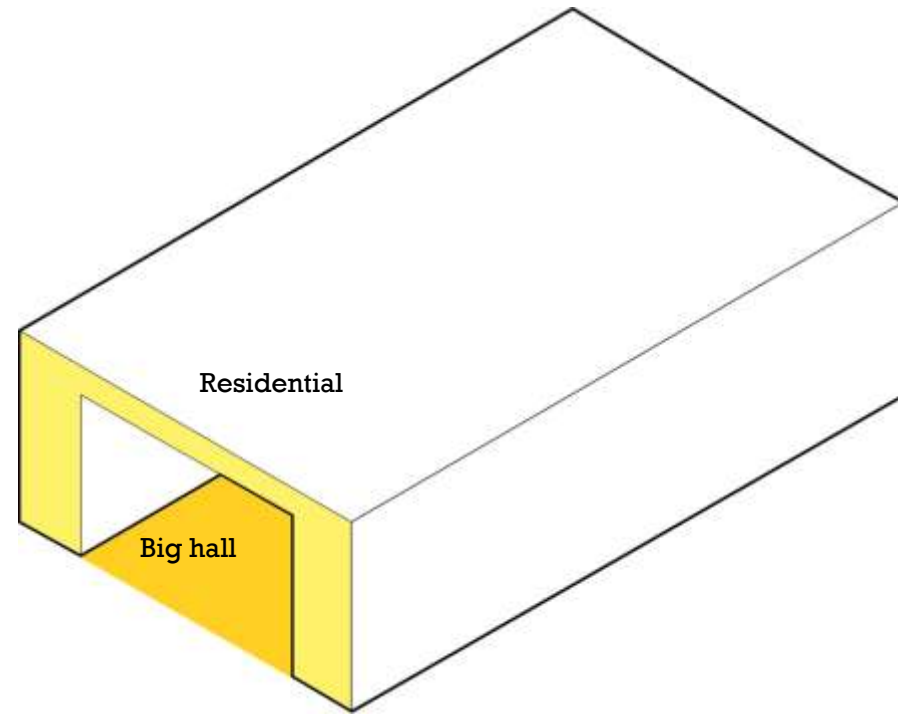
Current Food market

Bron: Provast

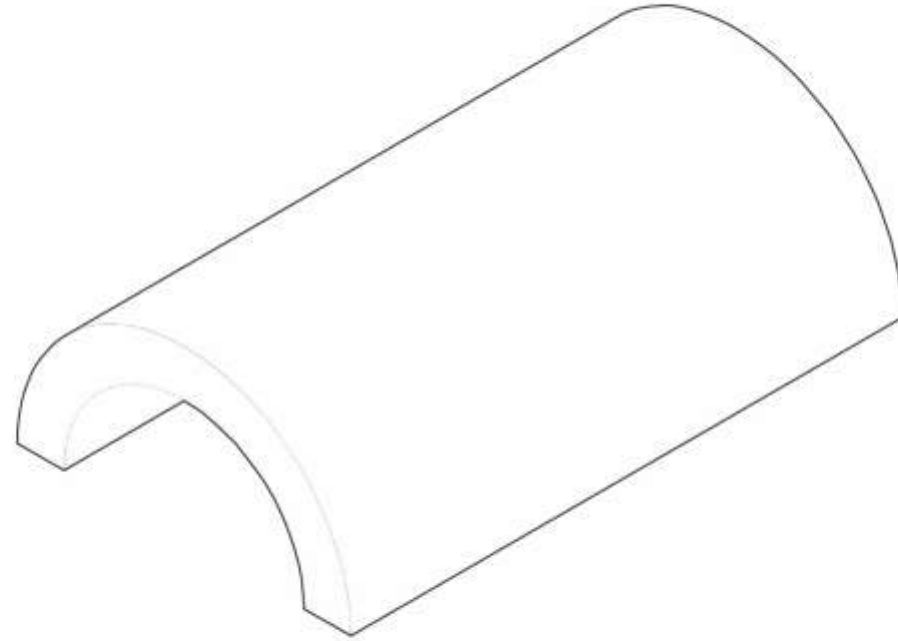
Apartments and Hall



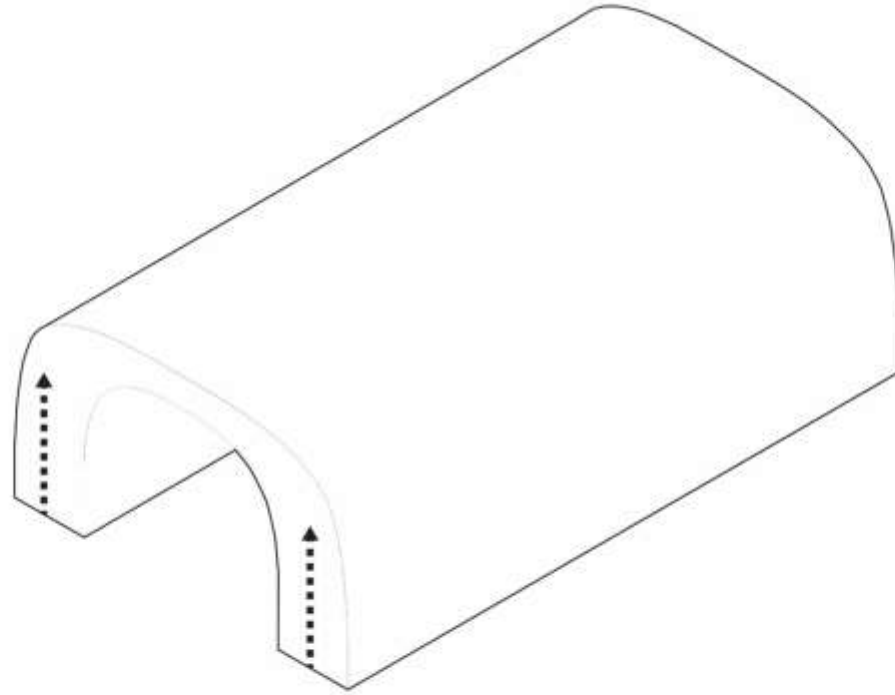
Big Hall

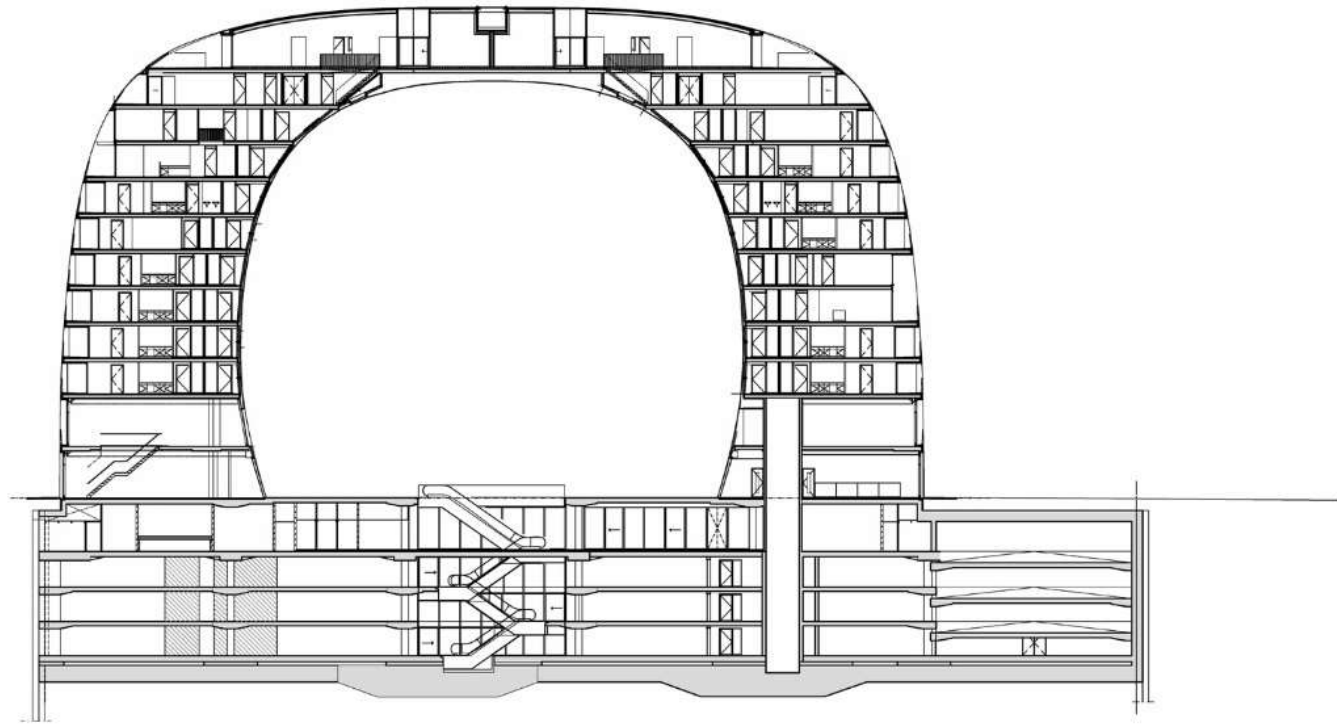


Market Hall

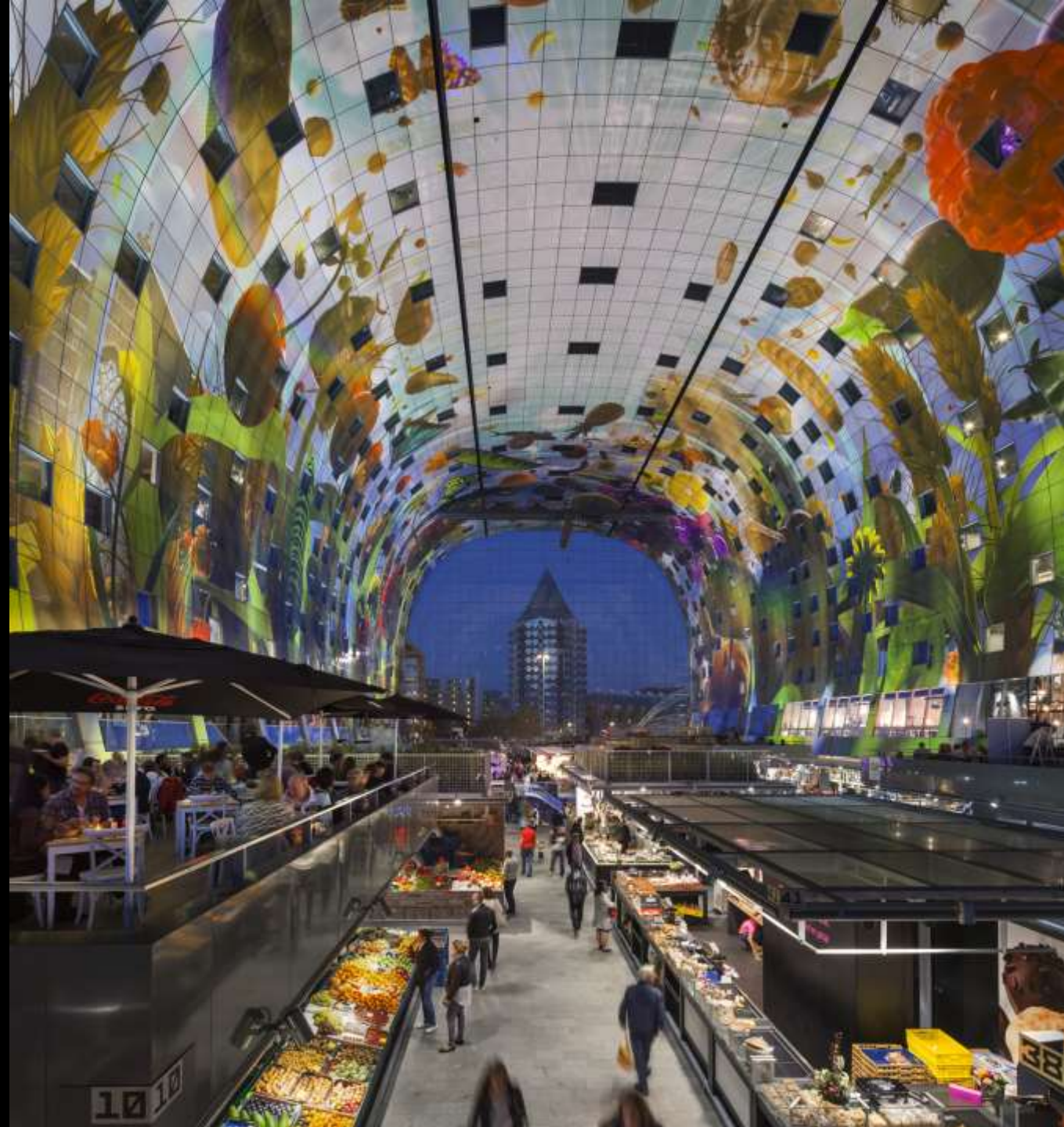


Elevators





















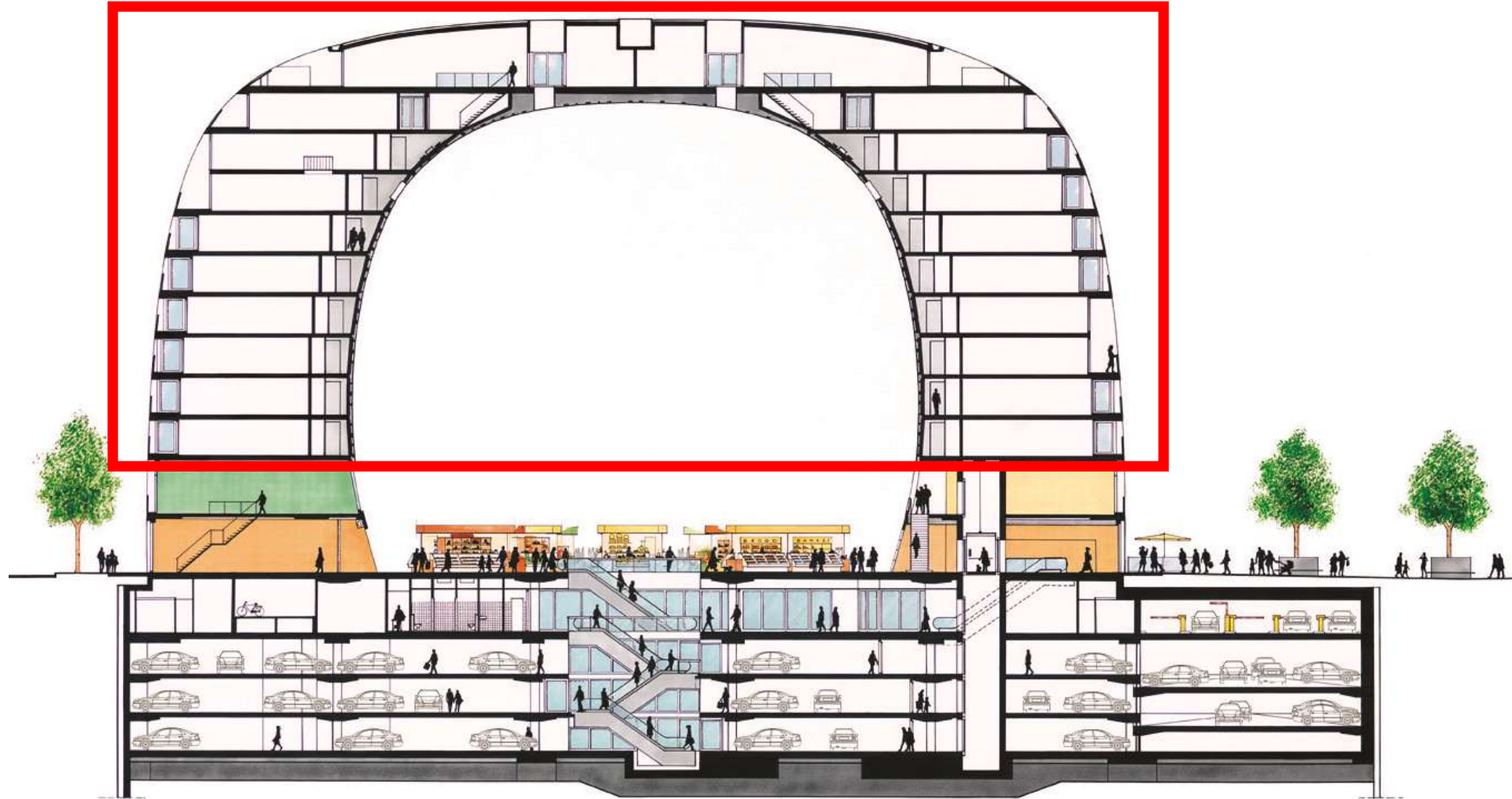








F2 to F11: apartments











public realm and the daily life







Seoul plaza



BEFORE



AFTER

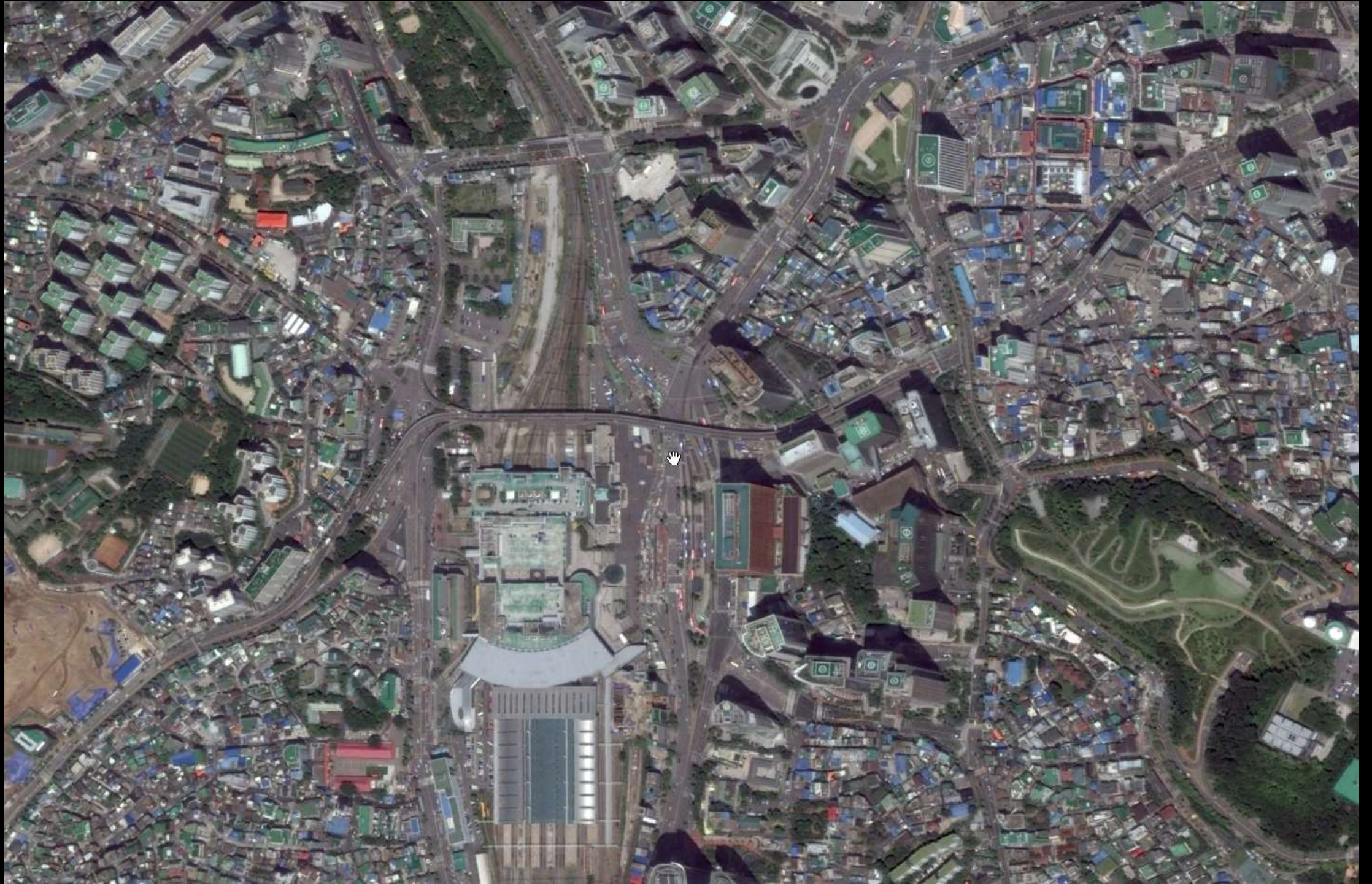
Chungyecheon

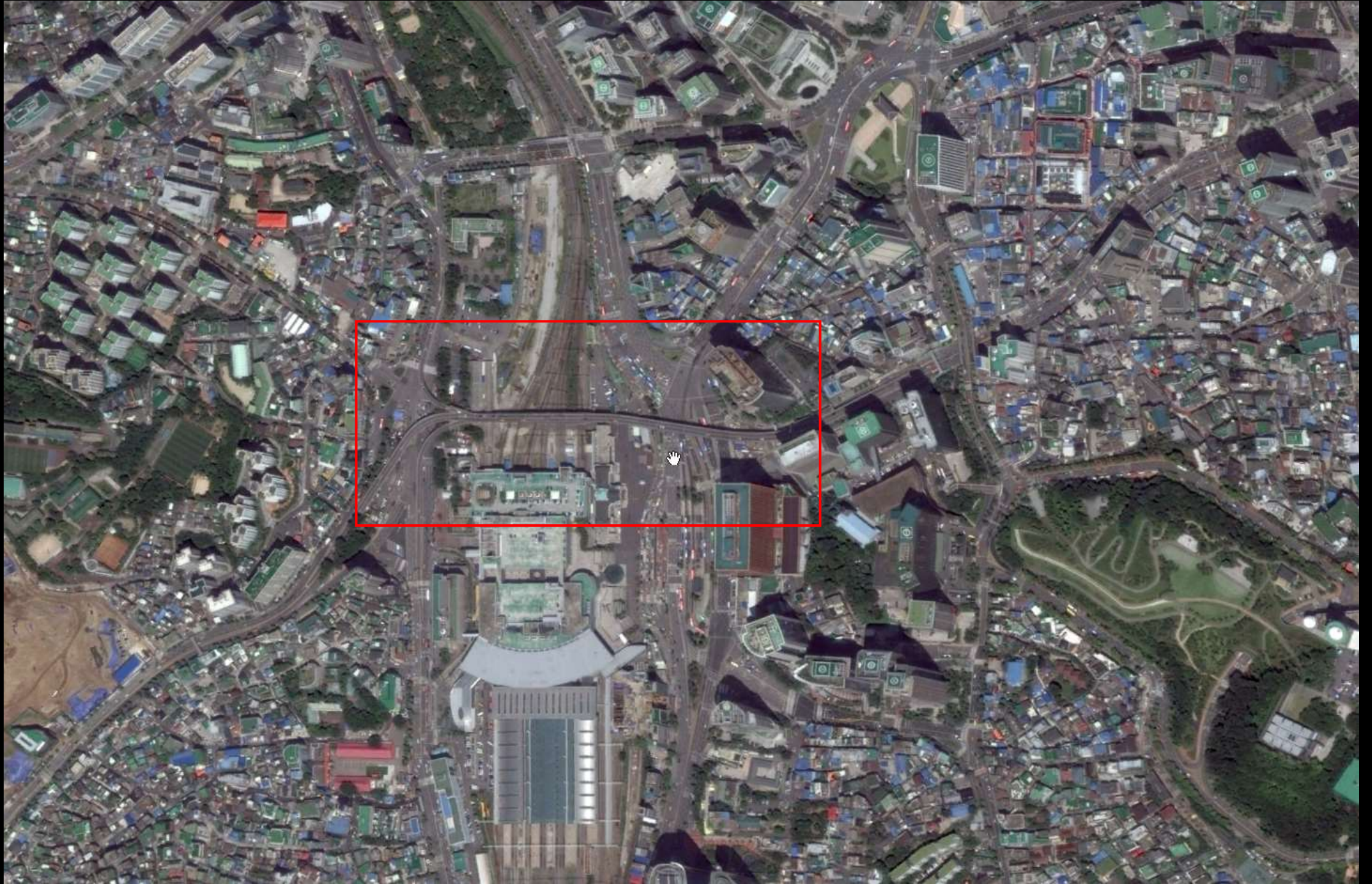


BEFORE



AFTER











street activities around the site



SUGGESTIONS ON COMMUNITY

2. OUTDOOR REQUIREMENTS OF THE NEIGHBORHOOD

- WITH A GOOD AMOUNT OF GREEN
- GREEN AREAS WITH DISABLE FACILITIES, AND WITH SOFT PAVINGS
- PLACES FOR BOTH ELDERLY AND KIDS TO GATHER
- SUFFICIENT AMOUNT OF OUTDOOR SITTING, RESTING AREAS. LIKE BENCHES, KIOSKS, AND SO ON.
- INTRODUCTION OF "SCENIC SPOTS"
- SLOPE SHOULD ALL BE LESS THAN 5% INCLINATION
- ANTI-SLIPPERY PAVING
- GOOD ARTIFICIAL LIGHTING FOR EVENING AND EARLY MORNING

SUGGESTIONS ON COMMUNITY

1. LIFE STYLE

- 50% OF THE INTERVIEWEES STAY AT HOME FOR MORE THAN **16 HOURS** / 30% STAY AT HOME OVER 20 HOURS PER DAY / ONLY 15% STAY AT HOME LESS THAN 12 HOURS PER DAY
- **MORNING EXERCISE, SUN BATHING AND STROLLING** ARE THE MAIN OUTDOOR ACTIVITIES OF OLD PEOPLE



50% of the interviewees



morning exercise



30% of the interviewees



sun bathing

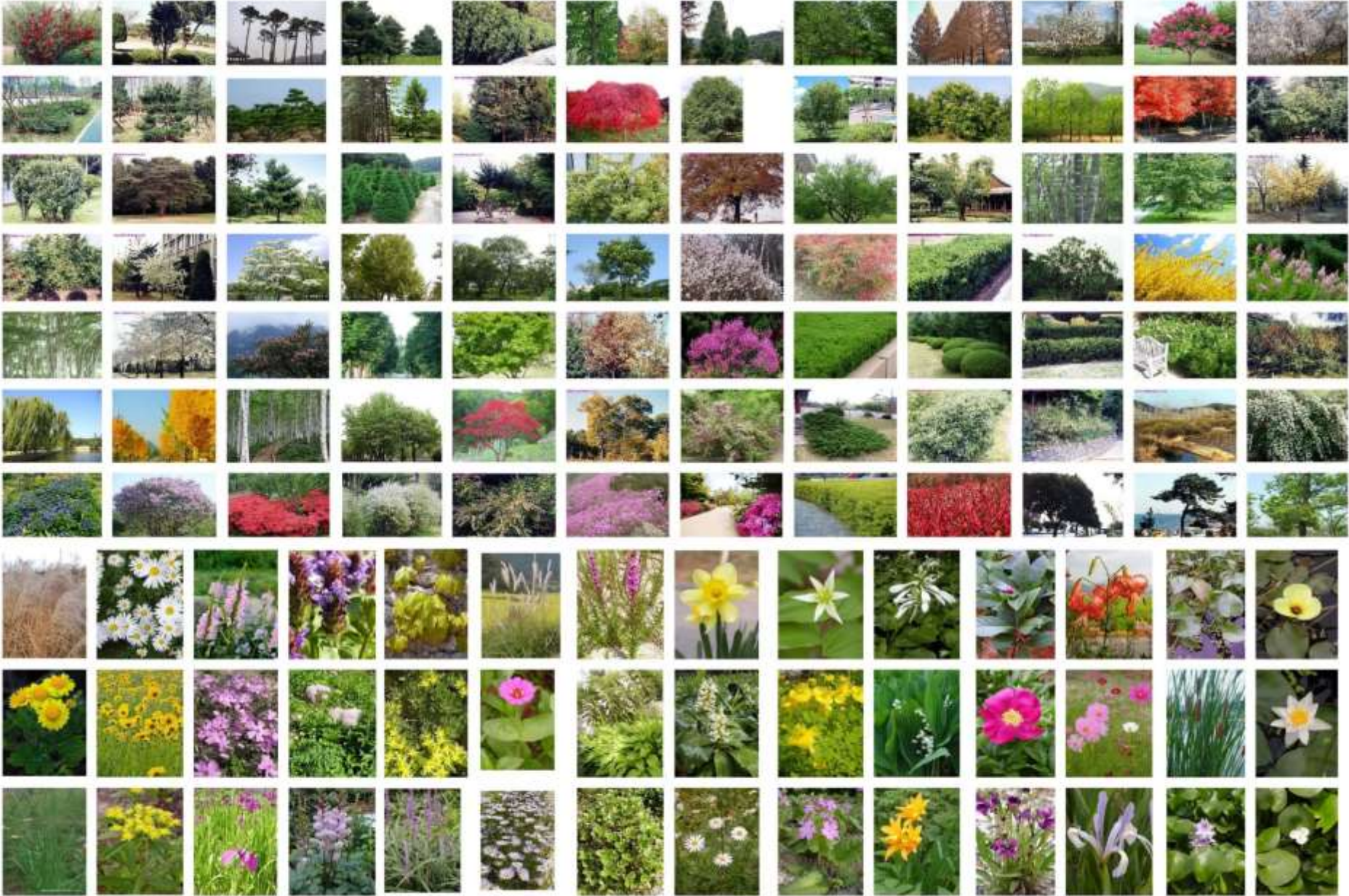


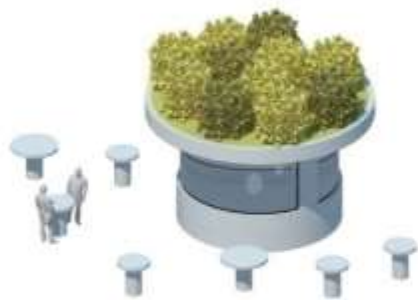
15% of the interviewees



strolling

Show the beauty of Seoul's plants





Tea Cafe



Sun Deck



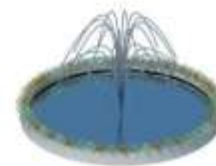
Street Market



Flower Shop



Street Library



Fountain



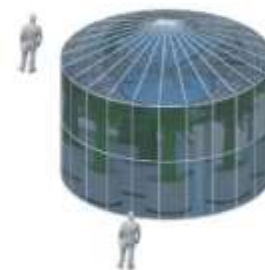
LED Floor



Observatory

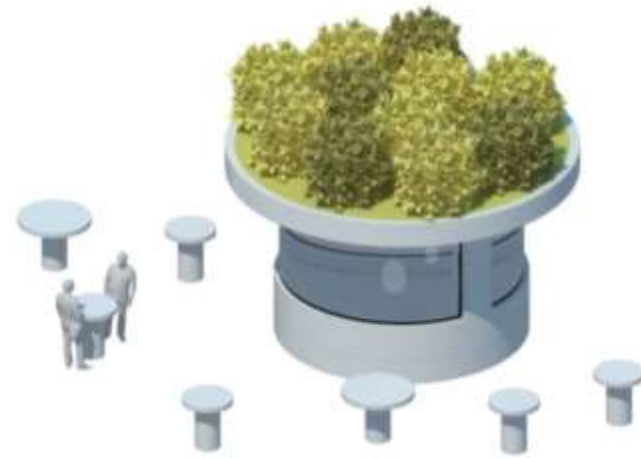
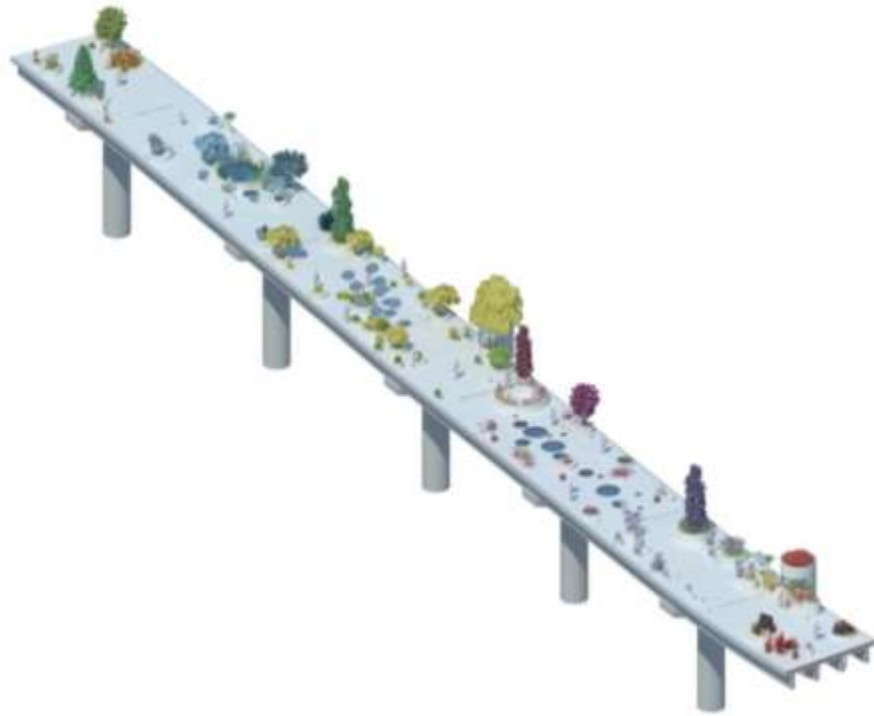


Street Exhibition

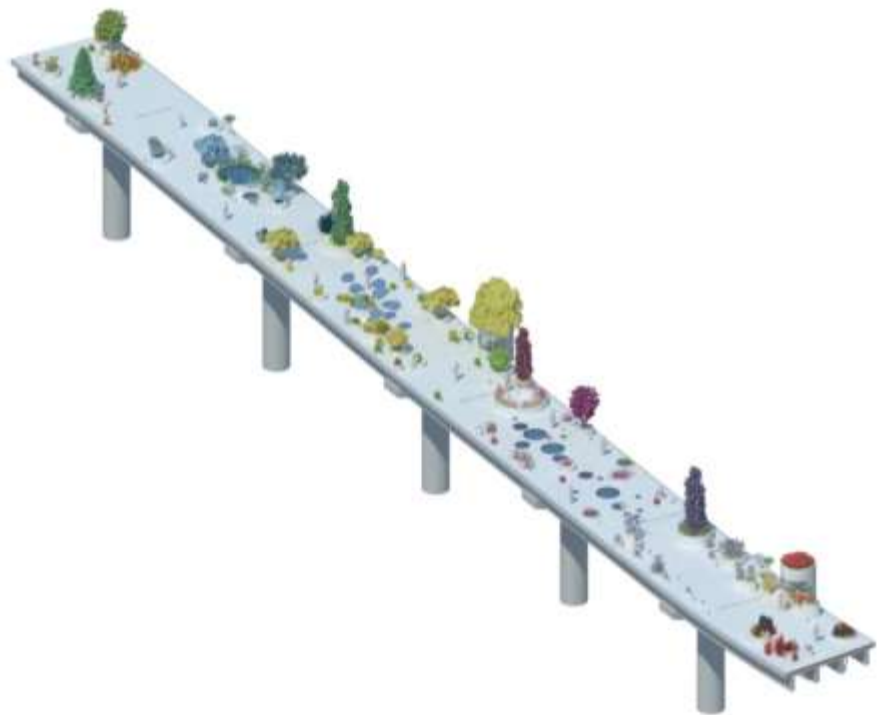


Green House

增加各类公共活动
Add activities

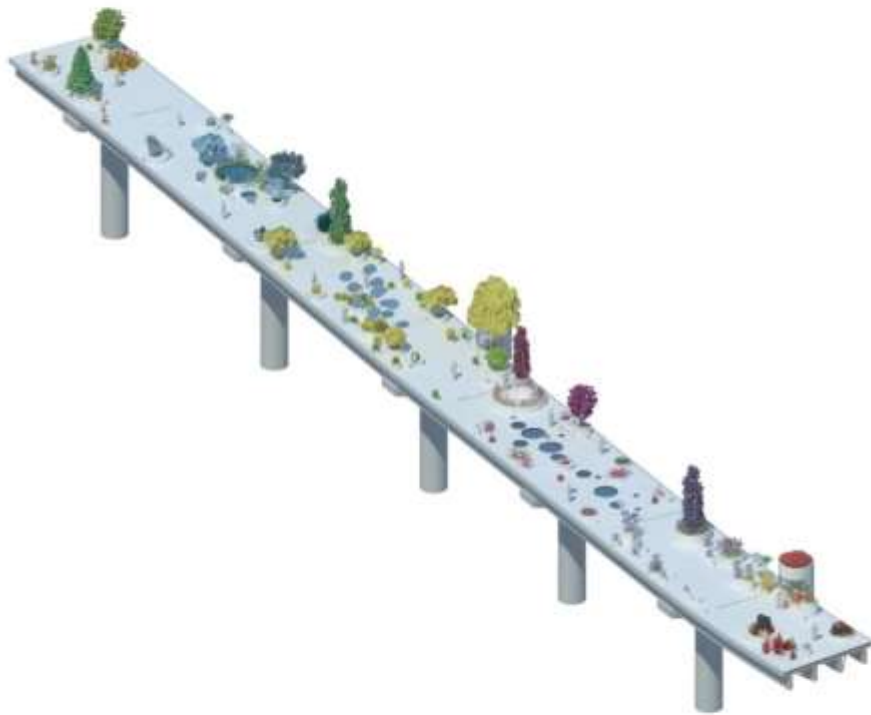


Tea Cafe
咖啡厅

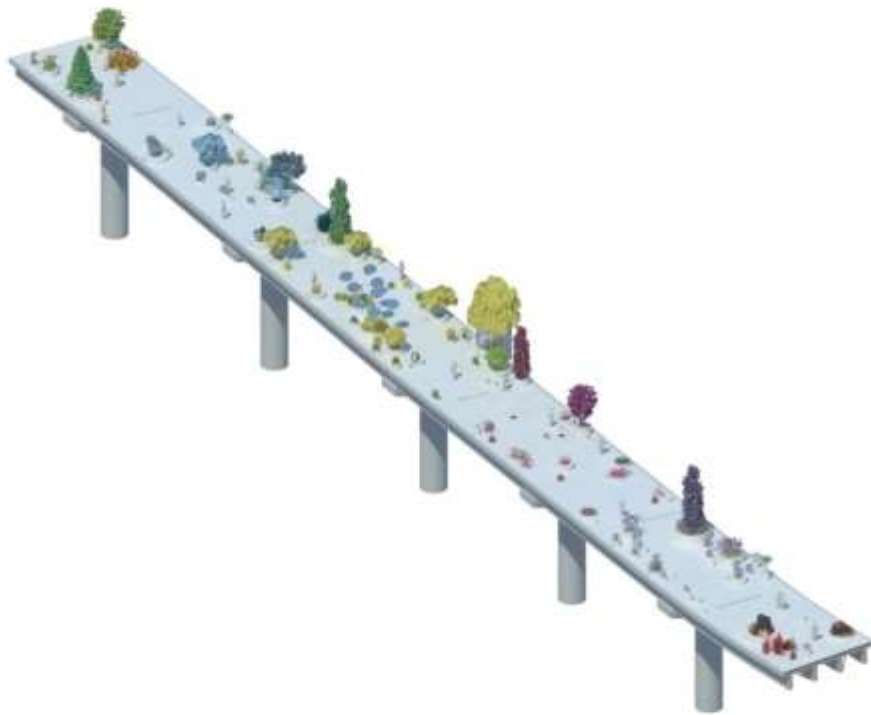


Flower Shop

花店



Street Library
街心图书馆



Toilet Tree
绿植卫生间





Seoul Skygarden

Seoul, South Korea
2015-current
9.661m²
Public Space
Transformation



















목련 '벌컨' Magnolia 'Vulcan'

목련 '별컨' 
Magnolia 'Vulcan'









HF 한국주식금융공사

JIN AIR

한진택배

02-3461-1566

Since 1944
DAEWOO
SPRING & SEAT

BASE

농협홍삼한삼인

독단초
Mullema pizza









방방 놀이터
Bangbang Playground
阪東遊子園「トランボリン」

방방 놀이터
Bangbang Playground
阪東遊子園「トランボリン」

이용안내
이용시간
이용요금
이용방법
이용규칙





자작나무
Betula platyphylla
var. *japonica*











Giving voice to all



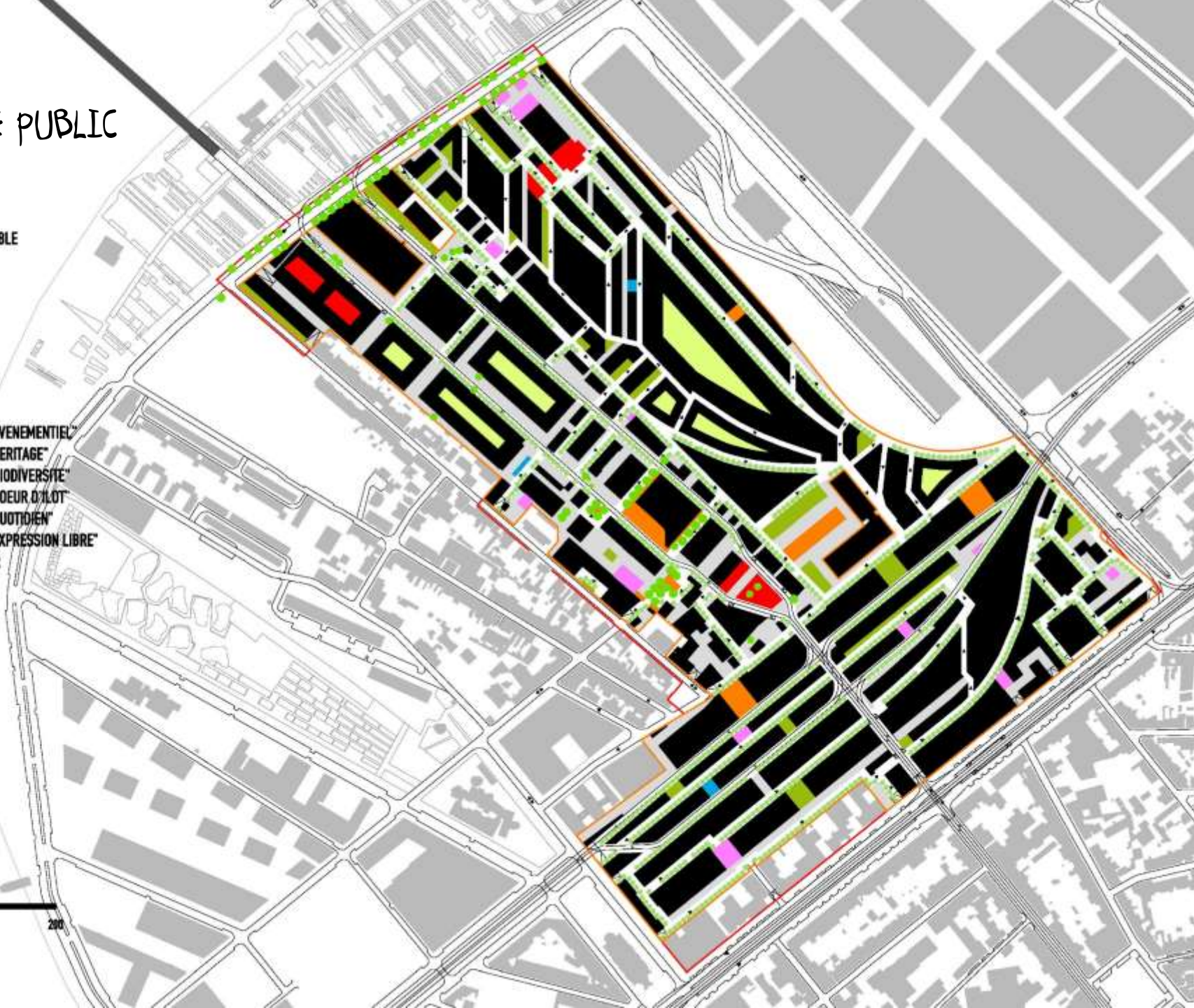
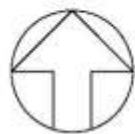


Bordeaux, France

ESPACE PUBLIC

LÉGENDE

-  BÂTI HORS ZAC
-  EMPRISE CONSTRUCTIBLE
-  ZAC
-  ÎLOTS
-  ZONE DE RENCONTRE
-  RÉSERVATION TCSP
-  ARRÊT TCSP
-  SENSE DE TCSP
-  SENSE DE TRAFIC
-  ENTRE DEUX
-  ESPACES DE POCHE "EVENEMENTIEL"
-  ESPACES DE POCHE "HERITAGE"
-  ESPACES DE POCHE "BIODIVERSITE"
-  ESPACES DE POCHE "COEUR D'ÎLOT"
-  ESPACES DE POCHE "QUOTIDIEN"
-  ESPACES DE POCHE "EXPRESSION LIBRE"
-  ARBRES À CONSERVER
-  ARBRES À PLANTER







Ghel architects























Small things that make a difference

But sometimes
Small is simply not big enough



An aerial photograph of the Hong Kong skyline at sunset. The sky is a mix of orange, pink, and purple. The city is densely packed with skyscrapers, with the Bank of China Tower and the HSBC Building being prominent. The Victoria Harbour is visible in the center, with several boats. The text "Thank You" is overlaid in the center in a white, bold, sans-serif font.

Thank You